

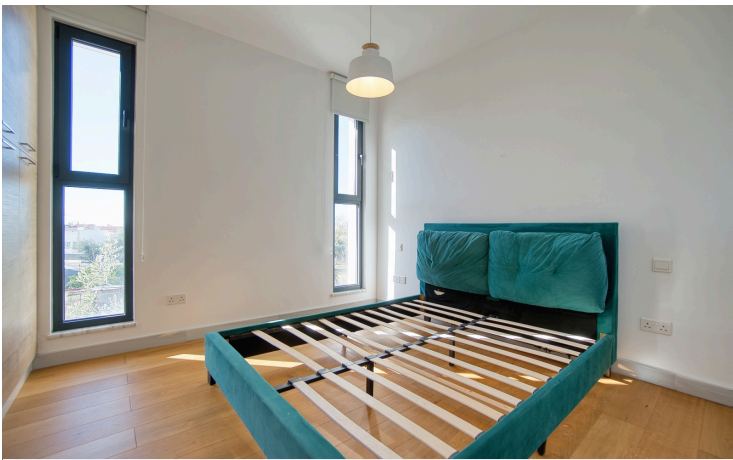
#4576

Modern House for Long-Term Rent in Emba Paphos

 Emba - Petridia, Paphos

€2,600 /Monat





Überblick

Spezifikationen

Schlafzimmer

 3


Badezimmer

 2

Bedeckt

 168 m²

Typ	Freistehende Villa
Duschen	2
Toiletten	3
Grundstück	322 m²
Überdachte Veranda	20 m²
Status	Gebraucht
Baujahr	2020

Möbliert	Voll möbliert
Struktur	Beton
Fassade	Ziegel
Gemeindekosten	€500
Communal charge frequency	Monatlich
Energieeffizienzklasse	 A

Beschreibung

FOR RENT: This modern detached villa is available for long term rent in the peaceful Emba - Petridia area. With 168 m² of internal space, the villa offers a spacious and comfortable living environment. Built in 2020, the property boasts an energy efficiency rating of A, helping keep utility costs low and ensuring a sustainable lifestyle.

The villa features two contemporary bathrooms and is fully furnished with stylish, high-quality furniture. Large windows fill the rooms with natural light and provide uninterrupted country views. The layout is well-designed for both family living and entertaining guests.

Situated in a secure gated complex, the home comes with its own private swimming pool, perfect for relaxing during warm days. The Emba - Petridia area is known for its tranquil surroundings, with easy access to local shops, schools, and amenities. Residents here enjoy a blend of rural charm and convenient living, with beautiful landscapes all around.

This exceptional property is proudly presented by Unique Cyprus Homes. If you are seeking comfort, privacy, and modern design in a sought-after location, this villa is an excellent choice. Contact us today to arrange a viewing.



Additional information

Ausstattung

Eingezäunter Komplex

Parkplatz, Unbedeckt

Klimaanlage, Geteiltes System

Pool, Privatgelände

Lager

Solarwassererhitzer

Eigenschaften

Ansicht des Landes

Druckwassersystem

En Suite Dusche

Gäste-WC

Internet

Leichter Zugang zu den Hauptstraßen

Marmortreppe

Pool view

Sackgasse

Veranda

Bewässerungssystem

Ecke

Energieeffiziente Türen/Fenster

Hell

Kombinierte Küche und Essbereich

Luxus-Spezifikationen

Modernes Design

Rollos

Schalldämmung

Doppelverglasung

Eingangstor, automatisiert

Floor-to-ceiling windows

Innentreppe

Laminatboden

Marmorboden

Neben der Grünfläche


Ruhebereich

Treppenaufbewahrung

Contact us



Aristos Aristodemou

 (+357) 99405421

 info@uniquecyprushomes.com

