

#4657

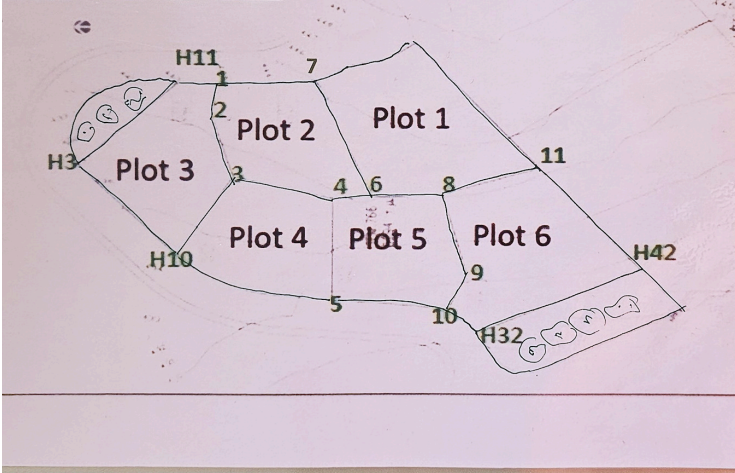
Large residential plot for sale in Tala Hills, Paphos with beautiful sea views

 Tala, Paphos

€360,000 +MwSt



| | Plot Size | Price € | Reg. N°. |
|------------|---------------------|-----------|----------|
| Plot No. 1 | - | SOLD | - |
| Plot No. 2 | 875m ² | € 340,000 | 0/13427 |
| Plot No. 3 | 978m ² | € 380,000 | 0/13425 |
| Plot No. 4 | 927m ² | € 360,000 | 0/13426 |
| Plot No. 5 | 903m ² | € 350,000 | 0/13428 |
| Plot No. 6 | 1,283m ² | € 500,000 | 0/13430 |



Überblick

Spezifikationen

Bereich

 927 m²

Typ

Baugrundstück

Besitzurkunde

Ja

Beschreibung

Large Residential Plots for Sale in Tala Hills, Paphos with Beautiful Sea Views

An exceptional opportunity to acquire a large residential plot in the prestigious Tala Hills area of Paphos. Positioned in an elevated location, the property enjoys beautiful panoramic views across Paphos and towards the Mediterranean Sea, offering the perfect setting for a luxury private residence or investment project.

The plot benefits from a peaceful residential environment surrounded by quality homes, while remaining just a short drive from Tala village square, international schools, shops, restaurants, golf resorts, and the beaches of Paphos.

Its generous size provides excellent flexibility for the design and construction of a spacious luxury villa with landscaped gardens, infinity pool, entertainment areas, and uninterrupted sea-view terraces.

Key Features

- ? Separate Title Deed
- ? Large residential plot in Tala Hills
- ? Elevated position with beautiful sea views
- ? Peaceful and sought-after residential location
- ? Suitable for a luxury villa development
- ? Easy access to Paphos town and amenities
- ? Close to international schools and golf resorts
- ? Excellent investment potential
- ? Registered road access and services nearby



Additional information

Eigenschaften

| | | |
|------------------------------------|-------------------------------------|---------------------------------------|
| Angeschlossen an elektrische Netze | Ansicht des Landes | Bergblick |
| Erhöht | Erstklassiges Land | In der Nähe von Einkaufsmöglichkeiten |
| Investitionsmöglichkeit | Leichter Zugang zu den Hauptstraßen | Meerblick |
| Neben der Grünfläche | Panoramablick | Ruhebereich |
| Sackgasse | Stadtblick | |

Planning zones

| Zone | Deckungsfaktor | Baufaktor | Max. Höhe | Max. Etagen | Affected percentage |
|------|----------------|-----------|-----------|-------------|---------------------|
| Res | 25% | 30% | 10 m | 2 | - |

Contact us



Aristos Aristodemou

 (+357) 99405421

 info@uniquecyprushomes.com

