

#1352

# APARTMENT AT LIMASSOL MARINA

 Limassol Marina, Limassol

**€2,200,000** +VAT







# MASTERPLAN: THE VISION...

1. Castle Residences
2. Island Villas
3. Peninsula Villas
4. Nereids Residences
5. Thetis Residences
6. Dioni Residences
7. Nireas Residences
8. Cultural Centre
9. Shopping and Dining Area
10. City Centre



# Overview

## Specifications

Bedrooms

 2


Bathrooms

 2

Covered

 157 m<sup>2</sup>

Type	Apartment
Toilets	3
Status	Key ready
Year of construction	2020
Title deed	Land

Furnished	Optional furnished
Structure	Concrete
Facade	Brick
Energy efficiency rating	 B

## Description

The first superyacht marina in Cyprus, and now only the 5th marina in the world to hold the prestigious 5 Gold Anchor Platinum Award, Limassol Marina combines elegant residences and a full-service Blue Flag marina for yachts up to 110m, with an enticing mix of restaurants and shops in the heart of Limassol.

The fully integrated marina development offers a unique cluster of apartments surrounded by the sea and luxury villas with their own private berths or exclusive water-space, just a stone's throw away from its sandy beach, world-class fitness, leisure, dining, shopping and cultural facilities.

Surrounded by water and set on a private island, accessed by a bridge, apartments at Castle Residences enjoy uninterrupted views of the sea, the Marina and the coastal city of Limassol.

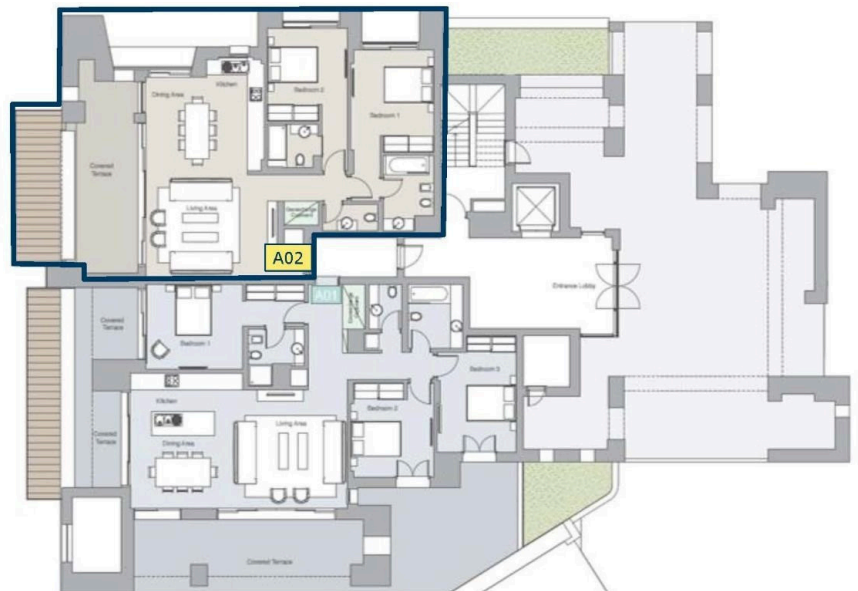
This is a one-off opportunity to live in an opulent residence surrounded by water. The elegant apartments are simply breath-taking!



# Floor plans

## APARTMENT A02

Floor	GF
No. of bedrooms	2
Covered Area m <sup>2</sup>	114
Covered Terraces m <sup>2</sup>	29
Common Area m <sup>2</sup>	14
Total Covered Area m <sup>2</sup>	157
Uncovered Terraces m <sup>2</sup>	14
Sundeck m <sup>2</sup>	-
Pool Spa	-
Price	€2,020,000 + VAT



# Additional information

## Facilities

Solar water heater

## Features

En suite bathroom

Near amenities

Sea front

Walking distance to beach

Heart of city center

Near bus route

Sea view

Yacht berth

Luxury specifications

Panoramic view

Spacious rooms

## Distances

Amenities

 100 m

Airport

 65 km

Sea

 50 m

Public transport

 200 m

Schools

 2 km

Resort

 100 m

## Contact us



**Aristos Aristodemou**

 [info@uniquecyprushomes.com](mailto:info@uniquecyprushomes.com)

