

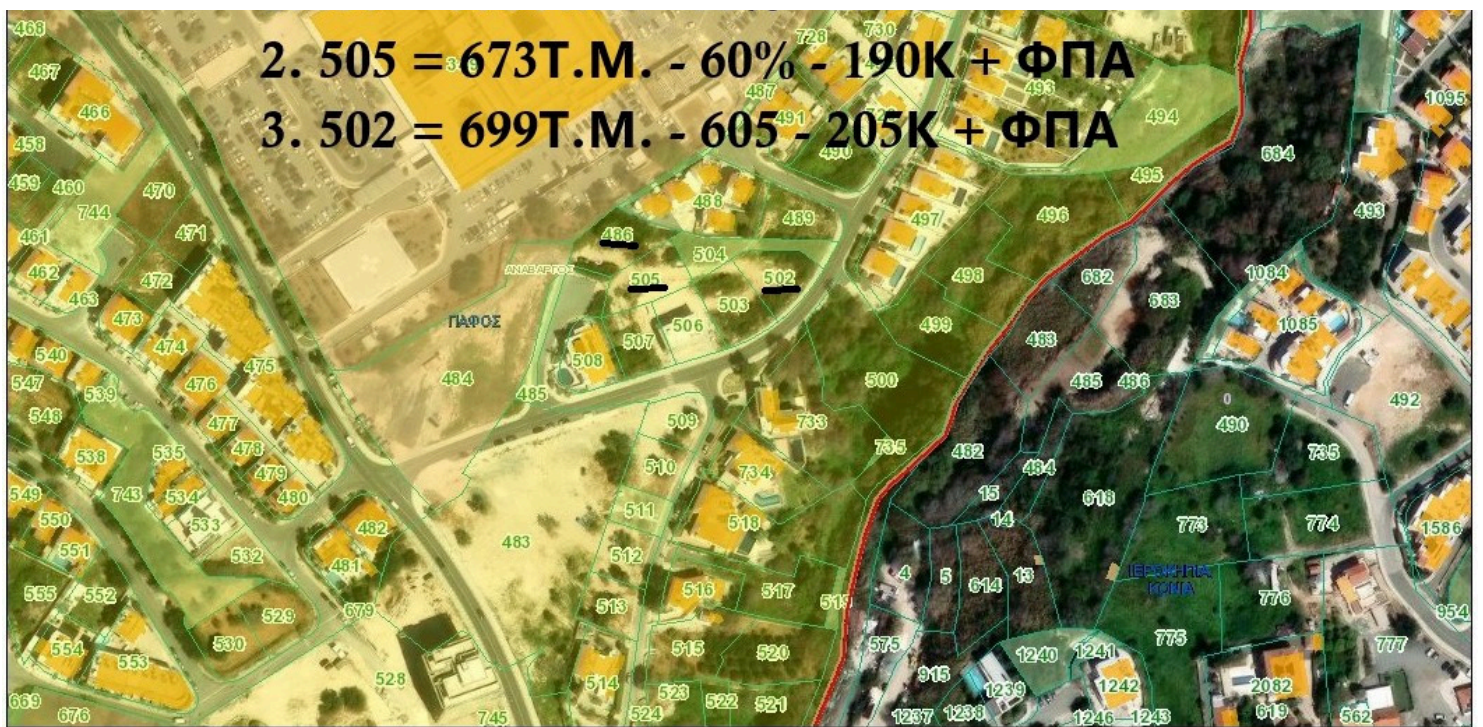
#2108

Residential Plot of Land in Anavargos

 Anavargos, Paphos

€190,000 +VAT





February 16, 2026

1:2,257



Overview

Specifications

Area

 **675 m²**

Type	Building Plot	Title deed	Yes
------	----------------------	------------	------------

Description

For sale: A spacious 675 m² building plot located in the highly desirable area of Anavargos. This large plot offers an excellent opportunity to design and build your ideal home or investment property on generous grounds.

Anavargos is a peaceful and well-established neighborhood, known for its welcoming atmosphere and blend of traditional charm and modern convenience. The area is perfect for both families and professionals, with schools, shops, restaurants, and other essential amenities only a short drive away. Residents appreciate the balance of a tranquil residential setting while still being close to everything they need.

The plot stands out with its stunning views, offering sweeping vistas over the city, beautiful mountains, unspoiled countryside, and the sparkling sea. The location ensures breathtaking scenery throughout the year, making it a fantastic choice for those who value both tranquility and inspiring surroundings.

This is a rare opportunity to purchase a prime building plot in one of the region's most sought-after areas. Do not miss your chance to secure this plot and create a home that captures city, mountain, country, and sea views. For further details or to arrange a viewing, contact Unique Cyprus Homes today.



Additional information

Features

City view

Connected to electric mains

Country view

Mountain view

Municipal water/sewage

Near amenities

Near bus route

Panoramic view

Sea view

Distances

Amenities

 1 km

Airport

 17 km

Sea

 5 km

Public transport

 1 km

Schools

 2 km

Resort

 5 km


Planning zones

Zone	Cover factor	Build factor	Max height	Max floors	Affected percentage
Res	35%	60%	10 m	2	-

Contact us



Aristos Aristodemou

 (+357) 99405421

 info@uniquecyprushomes.com

