

#4657

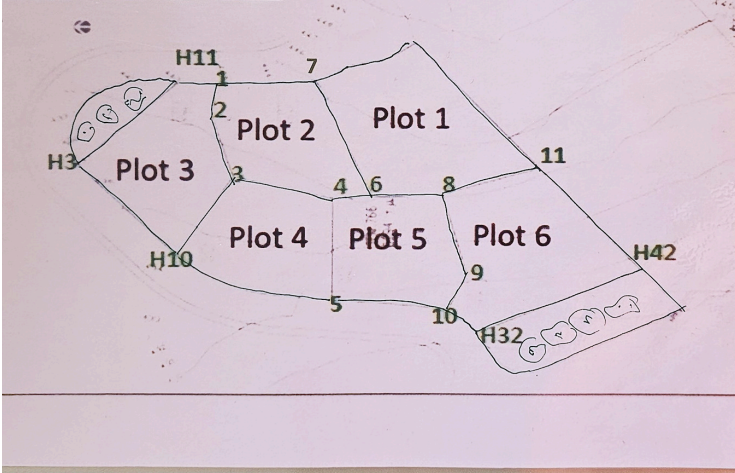
Large residential plot for sale in Tala Hills, Paphos with beautiful sea views

 Tala, Paphos

€360,000 +VAT



	Plot Size	Price €	Reg. N°.
Plot No. 1	-	SOLD	-
Plot No. 2	875m ²	€ 340,000	0/13427
Plot No. 3	978m ²	€ 380,000	0/13425
Plot No. 4	927m ²	€ 360,000	0/13426
Plot No. 5	903m ²	€ 350,000	0/13428
Plot No. 6	1,283m ²	€ 500,000	0/13430



Overview

Specifications

Area

 927 m²

Type	Building Plot	Title deed	Yes
------	----------------------	------------	------------

Description

Large Residential Plots for Sale in Tala Hills, Paphos with Beautiful Sea Views

An exceptional opportunity to acquire a large residential plot in the prestigious Tala Hills area of Paphos. Positioned in an elevated location, the property enjoys beautiful panoramic views across Paphos and towards the Mediterranean Sea, offering the perfect setting for a luxury private residence or investment project.

The plot benefits from a peaceful residential environment surrounded by quality homes, while remaining just a short drive from Tala village square, international schools, shops, restaurants, golf resorts, and the beaches of Paphos.

Its generous size provides excellent flexibility for the design and construction of a spacious luxury villa with landscaped gardens, infinity pool, entertainment areas, and uninterrupted sea-view terraces.

Key Features

- ? Separate Title Deed
- ? Large residential plot in Tala Hills
- ? Elevated position with beautiful sea views
- ? Peaceful and sought-after residential location
- ? Suitable for a luxury villa development
- ? Easy access to Paphos town and amenities
- ? Close to international schools and golf resorts
- ? Excellent investment potential
- ? Registered road access and services nearby



Additional information

Features

City view	Connected to electric mains	Country view
Cul de sac	Easy access to main roads	Elevated
Investment opportunity	Mountain view	Near amenities
Next to green area	Panoramic view	Prime land
Quiet area	Sea view	

Planning zones

Zone	Cover factor	Build factor	Max height	Max floors	Affected percentage
Res	25%	30%	10 m	2	-

Contact us



Aristos Aristodemou

 (+357) 99405421

 info@uniquecyprushomes.com

