

#4657

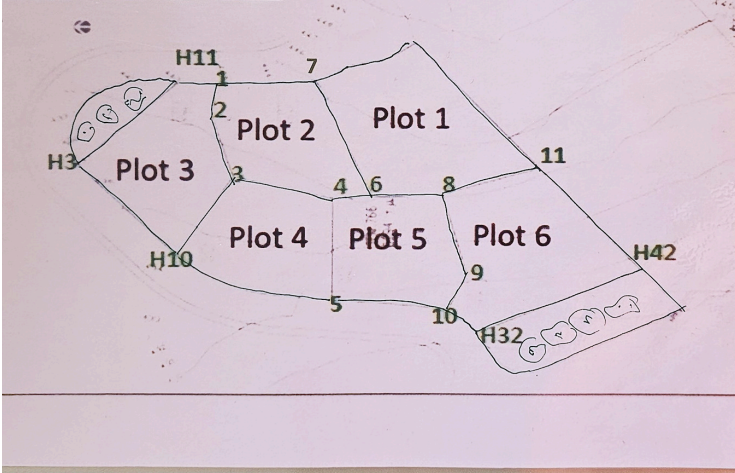
Large residential plot for sale in Tala Hills, Paphos with beautiful sea views

 Tala, Paphos

€360,000 +НДС



	Plot Size	Price €	Reg. N°.
Plot No. 1	-	SOLD	-
Plot No. 2	875m ²	€ 340,000	0/13427
Plot No. 3	978m ²	€ 380,000	0/13425
Plot No. 4	927m ²	€ 360,000	0/13426
Plot No. 5	903m ²	€ 350,000	0/13428
Plot No. 6	1,283m ²	€ 500,000	0/13430



Обзор

Параметры

Площадь

 927 m²

Тип

Строительный Участок

Право собственности

Да

Описание

Large Residential Plots for Sale in Tala Hills, Paphos with Beautiful Sea Views

An exceptional opportunity to acquire a large residential plot in the prestigious Tala Hills area of Paphos. Positioned in an elevated location, the property enjoys beautiful panoramic views across Paphos and towards the Mediterranean Sea, offering the perfect setting for a luxury private residence or investment project.

The plot benefits from a peaceful residential environment surrounded by quality homes, while remaining just a short drive from Tala village square, international schools, shops, restaurants, golf resorts, and the beaches of Paphos.

Its generous size provides excellent flexibility for the design and construction of a spacious luxury villa with landscaped gardens, infinity pool, entertainment areas, and uninterrupted sea-view terraces.

Key Features

- ? Separate Title Deed
- ? Large residential plot in Tala Hills
- ? Elevated position with beautiful sea views
- ? Peaceful and sought-after residential location
- ? Suitable for a luxury villa development
- ? Easy access to Paphos town and amenities
- ? Close to international schools and golf resorts
- ? Excellent investment potential
- ? Registered road access and services nearby



Дополнительная информация

Характеристики

Вид на город	Вид на горы	Вид на деревню
Вид на море	Инвестиционная возможность	Панорамный вид
Подключен к электрической сети	Престижный участок	Приподнятый
Рядом с инфраструктурой	Рядом с парковой зоной	Тихий район
Тупик	Удобный доступ к основным дорогам	


Планировочные зоны

Зона	Коэффициент покрытия	Коэффициент застройки	Макс высота	Макс количество этажей	Затронутая доля
Res	25%	30%	10 m	2	-

Связаться с нами



Aristos Aristodemou

 (+357) 99405421

 info@uniquecyprushomes.com

